

Site Map Builder

Installation Guide

Table of contents:

1	INTRODUCTION.....	3
2	INSTALLATION PROCEDURE.....	4

List of figures:

Figure 1: Installation procedure (step 1/5)	4
Figure 2: Installation procedure (step 2/5)	5
Figure 3: Installation procedure (step 3/5)	6
Figure 4: Installation procedure (step 4/5)	6
Figure 5: Installation procedure (step 5/5)	7
Figure 6: Starting the “Site Map Builder”	7

1 INTRODUCTION

This document is an installation guide for the Site Map Builder application. It only contains instructions on how to install the Site Map Builder.

For detailed instructions on how to use the application once it has been installed, consult the Site Map Builder User Guide.

2 INSTALLATION PROCEDURE

In order to begin installing the “Site Map Builder” double click the “Setup.Exe” file. The following screen will be displayed.

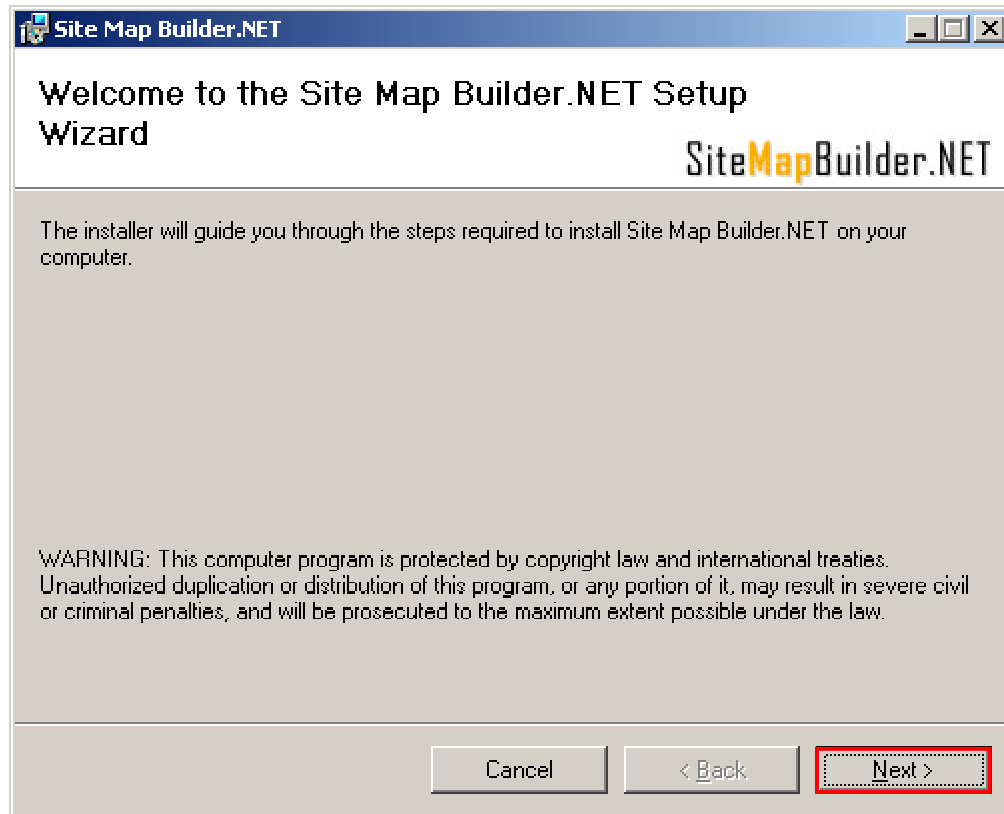


Figure 1: Installation procedure (step 1/5)

Click on the “Next” button in order to continue installing the “Site Map Builder”. The following screen will be displayed.

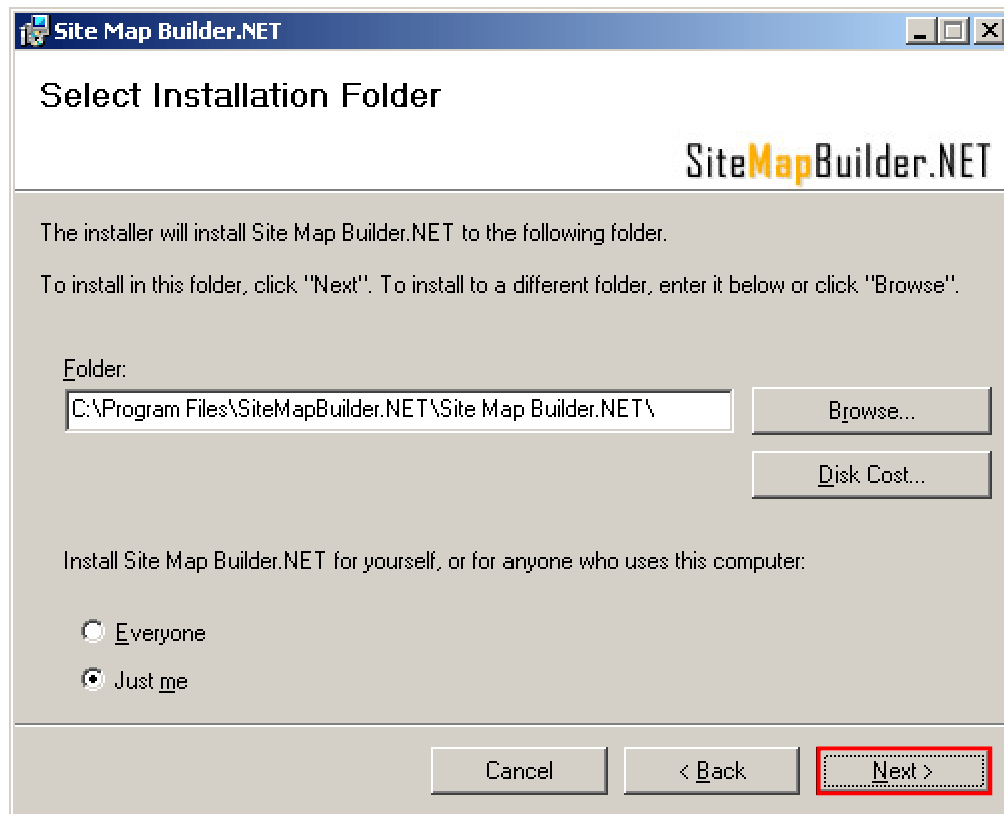


Figure 2: Installation procedure (step 2/5)

You can choose to install the application to the default directory (**C:\Program Files\SiteMapBuilder.NET\Site Map Builder.NET**) or set the desired folder by clicking the “Browse” button.

Notes:

- **Disk cost** – click on this button to overview the disk space by partitions and make a decision on which to install the application
- **Users** – use the radio buttons to choose whether the application will only be used by you or the other users will be allowed to use it as well

Once you have defined the desired location, click the “Next” button. The following screen will be displayed.

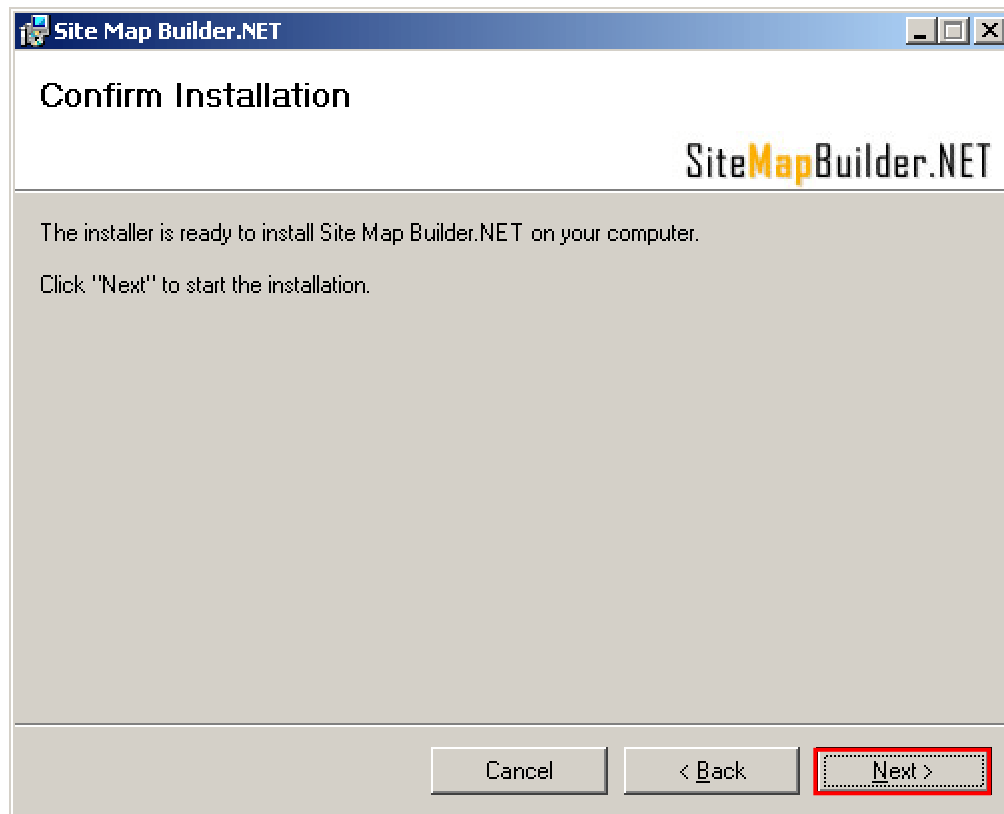


Figure 3: Installation procedure (step 3/5)

Inside this screen you can still determine to go back and change the settings, or click on the "Next" button in order to install the application. The following screen will be displayed once you click the "Next" button.

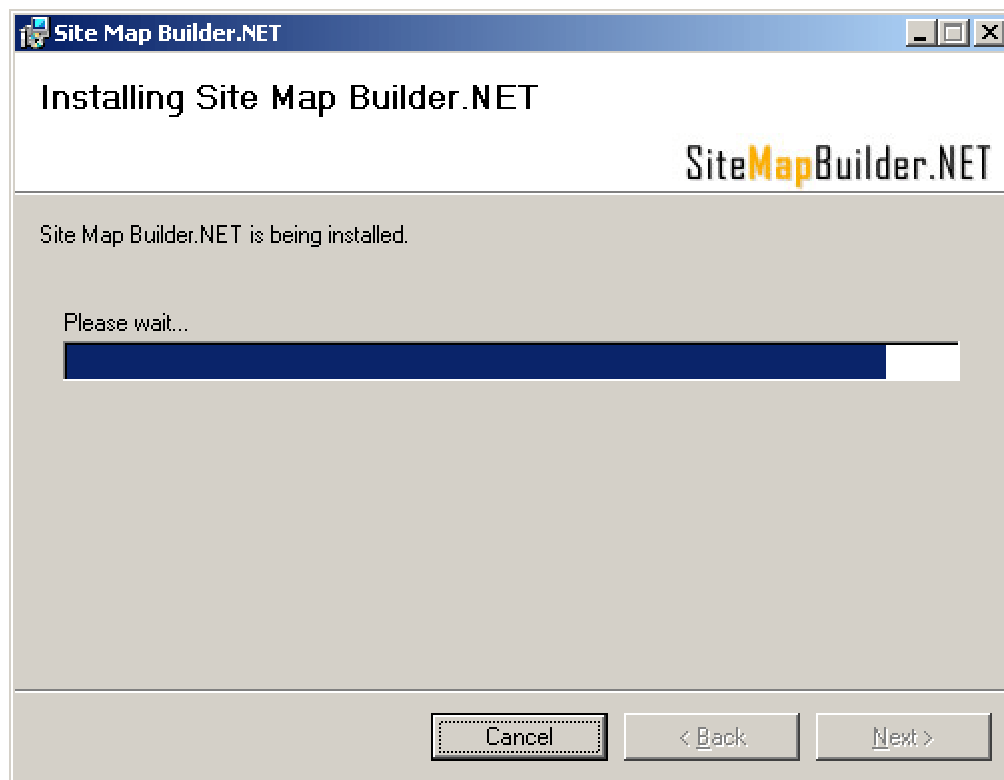


Figure 4: Installation procedure (step 4/5)

The progress indicator will be displayed. Wait until it reaches the end and the following screen will be displayed.

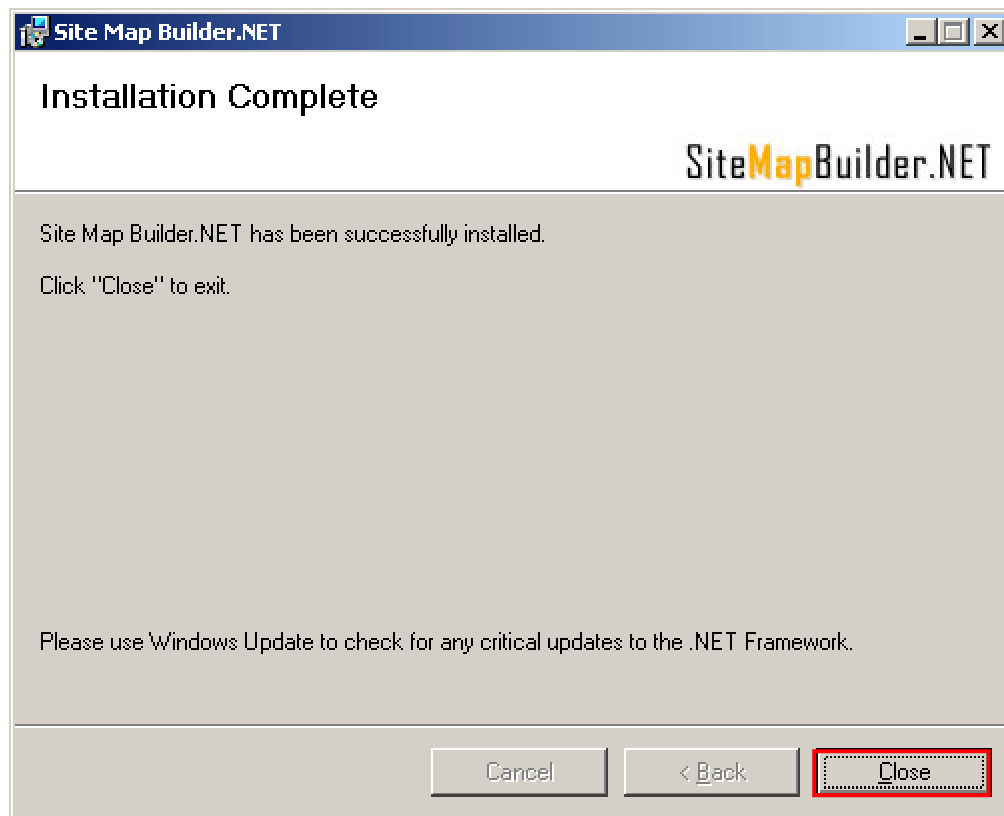


Figure 5: Installation procedure (step 5/5)

This screen is a confirmation on successful installation. Click "Finish" to complete the installation procedure.

Note: in order to start the application, click on the "Site Map Builder .NET" shortcut placed on your desktop or choose the same shortcut from the start menu.

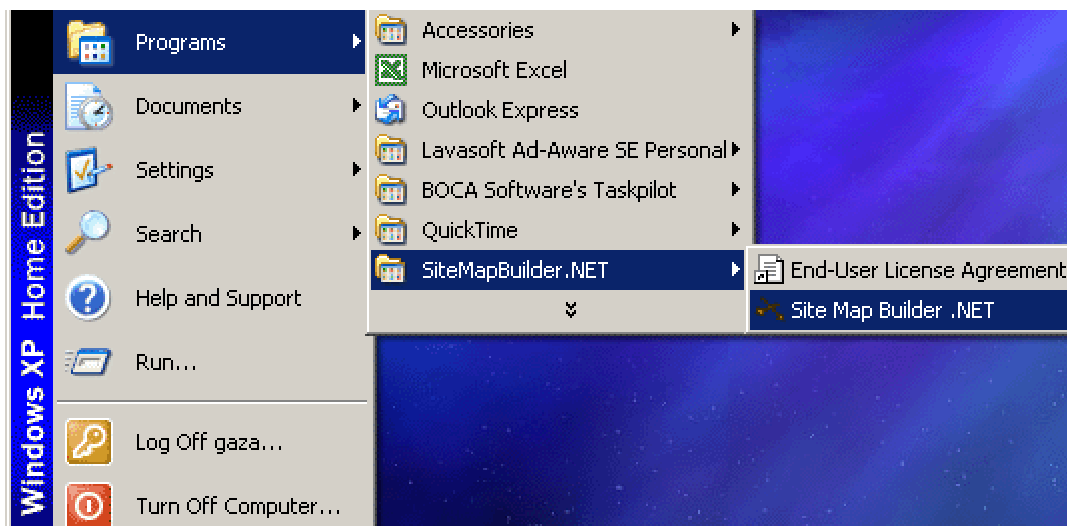


Figure 6: Starting the "Site Map Builder"